



Bathing establishment Fact Sheet

Bathhouse name	Danio Beach Club
Address	Viale Bernardini n. 704
City	Lido di Camaiore (Lu)
Contacts	+39 0584632005
Website	https://www.facebook.com/DanioBeachClub/?locale=it_IT

TESTED BY: [Handy Superabile - Social Promotion Association](#) in summer 2023

Please note The following information refers to the verification date shown at the bottom of each card. **The Association** is not responsible for any significant changes made by the property after the visit.

Summary

Bathing establishment Fact Sheet	1
Arrival at the facility	2
Private/public parking.....	2
Pathway from the parking lot to the main entrance	2
Reception.....	3
Bar/restaurant	4
Internal Pathways and common services.....	5
Internal Pathways	5
Toilet and shower accessible to guests with reduced mobility	5
Changing room	7
Beach.....	7
Children's play area	9
Swimming pool	10
Doctors' Offices/Healthcare Facilities	10

Project carried out with the contribution of the





Arrival at the facility

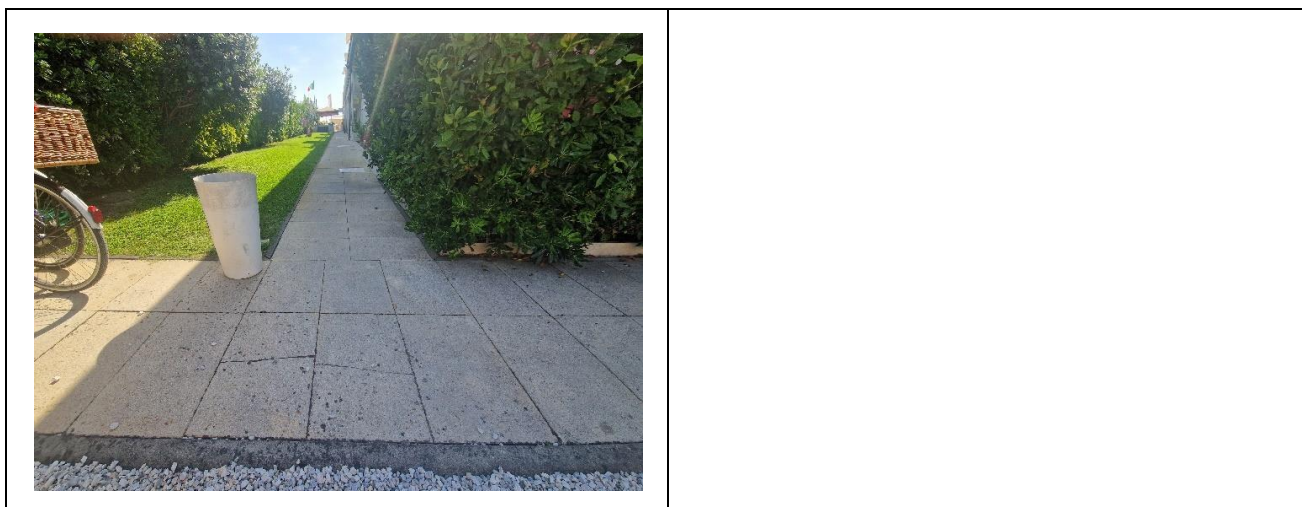
Private/public parking

Presence of private parking	YES
Type of private car park	Gravel
Presence of parking space reserved for people with disabilities	NO
Public parking nearby	YES
Type of public car park	asphalt
	

Pathway from the parking lot to the main entrance

Pathway from the car park to the entrance	flat on a gravel surface that can make it difficult for wheelchair users to move around
There are markers and tactile maps	NO
Usable door/entrance width	more than 90 cm





Reception

Umbrella booking system	<input checked="" type="checkbox"/> Web-based on spiagge.it <input checked="" type="checkbox"/> By phone <input checked="" type="checkbox"/> On-site
Presence of multilingual staff	YES
Presence of plant plan with key to services available	YES
Presence of visuo-tactile map	NO
Bulletin board/information panels at an average height of 130 cm in a well-lit area and font size at least 14 dpi with a contrast ratio greater than 4.5:1	NO
The staff attended training courses on welcoming people with different disabilities	NO





Bar/restaurant

Type of venue	Bar/restaurant
Access to the premises	With 5 steps of 3 and 12 cm, hopefully via a ramp length 850 cm, width 115 cm, slope 3.6%
Usable door/entrance width	more than 90 cm
Bar counter	more than 100 cm
Types of tables	4-legged and with central support
Space underneath the tables from the floor	more than 65 cm
Multilingual menu	YES
Menus with large print fonts	NO
Braille menu	NO
Table service for people with disabilities	YES
Availability of gluten-free food	<input checked="" type="checkbox"/> bread <input checked="" type="checkbox"/> pasta <input type="checkbox"/> biscuits <input checked="" type="checkbox"/> ice cream <input type="checkbox"/> Pre-packaged foods



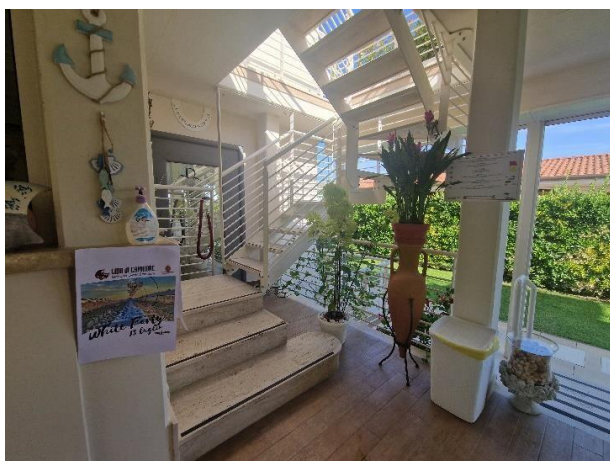


Internal Pathways and common services

Internal Pathways

Indicate whether the pathways connecting the entrance to the beach are flat or with ramps in addition to those already described

It has a staircase that leads to the pool area on the terrace of the establishment, and a second staircase that leads to the restaurant area on the terrace, both of which can be overcome by elevator. From the pool area you can access the restaurant's terrace; Door width 90 cm





Toilet and shower accessible to guests with reduced mobility

Number of toilets accessible/usable by guests with reduced mobility	1
Access to the premises	via ramp length 850 cm, width 115 cm, gradient 3.6 %
Usable width of the entrance door	80 cm
Toilet height	52 cm
Open front toilet seat	YES
Support handles	on both sides

Project carried out with the contribution of the





Flexible hand shower at the side of the toilet	NO
Free space on the sides of the toilet	left 16 Cm right 47 Cm frontal more than 90 cm
Electric doorbell/phone	YES
Washbasin with space underneath for wheelchair	63 cm
Height from the ground on the bottom edge of the mirror	sufficient for use by wheelchair users
Baby changing table	YES
	
Accessible shower available for guests with reduced mobility	YES in common with the toilet room, in disuse during the verification carried out
Access to the shower room if separated from the toilet room	Flat
Useful width of the door/entrance gate if separated from the toilet room	more than 90 cm
Shower type	open-type
Floor-level shower	YES
Shower chair	missing
Grab bar	YES
Presence of shower head or ups and downs	Sliding rails with lowest point height 120 cm





Electric doorbell/phone	YES
-------------------------	-----

Changing room

Accessible changing room available for guests with reduced mobility	YES, there are private cabins with bathrooms
Access to the premises	Flat
Usable door/entrance width	Approx. 90 cm
Size of the dressing room	width 149 cm and depth 206 cm and 128 cm from the shower cubicle
Presence of a cot	NO
Coat rack height from the ground	over 140 cm and not accessible to wheelchair users





Beach

Type of beach	sand
Access to the beach	Flat from the walkway to the left of the structure and via a ramp length 240 cm, width 220 cm, slope 4.6% to access from the right side





Walkway to reach the umbrellas	YES
Type of walkway	PVC/Cement
Walkway width	100 cm
	
Removable Platform between the walkway and the umbrella station to facilitate the passage and parking wheelchair	YES
Amphibious beach chair available for helping people with reduced mobility to enjoy swimming (owned by the establishment or by association)	YES
	







Children's play area

Children's play area	inaccessible to children with reduced mobility due to sandy bottom. There is also a table tennis and table football on the lawn and self-locking
There are games for children with reduced mobility	NO
	





Swimming pool

The property has a swimming pool	YES
Access to the swimming pool	with 17 steps, 20 cm high, which can be overcome by elevator, with a door width of 79 cm and internal dimensions of 90 cm and a depth of 123 cm
Useful width of the entrance gate	79 cm
Access to the pool	with ladder
Bathing aids for guests with reduced mobility	amphibious chair
	

Doctors' Offices/Healthcare Facilities

Hospitals near the facility	Ospedale Versilia SS 1, 335, 55049 Camaiole LU Telephone: 0584 6051
Other Healthcare Facilities	ASL Health District n. 12 Viareggio Via Sant'Elme, 30 Tel. 058483873





	<p>Croce Verde Viale Italice, angolo via Risorgimento Tel. 058484013 Free First Aid for white codes Night medical service Tel. 0584 83896 (h. 20-8)</p> <p>Misericordia Via P. I. da Carrara, 32 Tel. 0584752133/0584 752149</p> <p>Medical service "San Camillo" Nursing Home Via P.I. da Carrara, 37 Tel. 0584 7391</p> <p>Dialysis service at Croce Verde Viale Italice, angolo via Risorgimento Tel.058484013 affiliated with AUSL</p>
--	---

TESTED BY: **Handy Superabile Social Promotion Association in summer 2023**

